



Art Society of Strathcona County

PAINTING WITH PASTELS

(INTERMEDIATE TO ADVANCED)

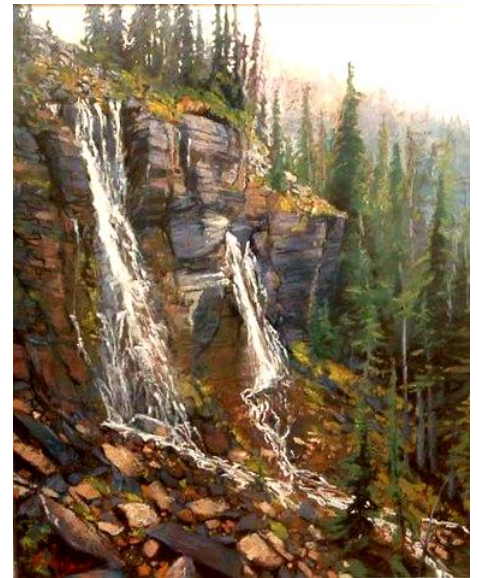
Instructor - Susan Woolgar



This two day workshop will focus on creating your own working surfaces, developing layering techniques to create depth, textures to create dynamic surfaces on your painting and building your pastel using various mark making variations.

For the advanced painters, development of style, focusing on the principles of design to create dynamic work.

Susan will work with people individually to help guide them towards whatever style they choose to work in. Includes demos and critiques and an atmosphere of encouragement and fun.



February 9 & 10, 2019, 10-4pm

Member \$110 / Non Member \$140

Register Online at www.artstrathcona.com PayPal, Visa, MasterCard, Debit. For more information phone 780-449-4443 or email artsoc@telus.net

Payment must be made at time of Registration

We are located in the A.J.Ottewell Centre (the Barn) 590 Broadmoor Blvd. Sherwood Park
If cancelling \$10 will be deducted from refund; however, no refunds on cancellations within two weeks of workshop. Refunds will be made within one month

